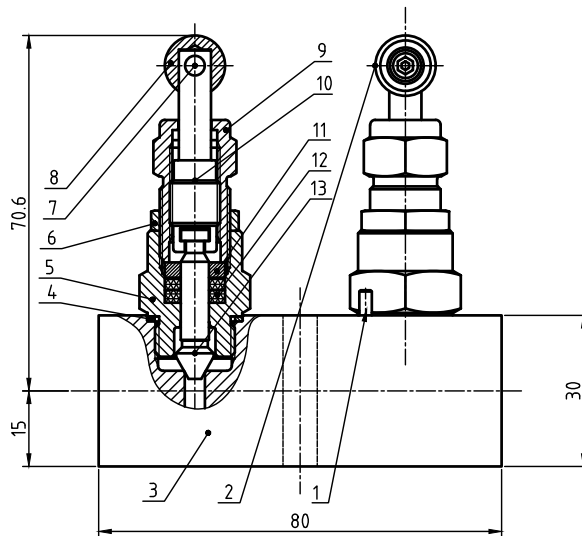
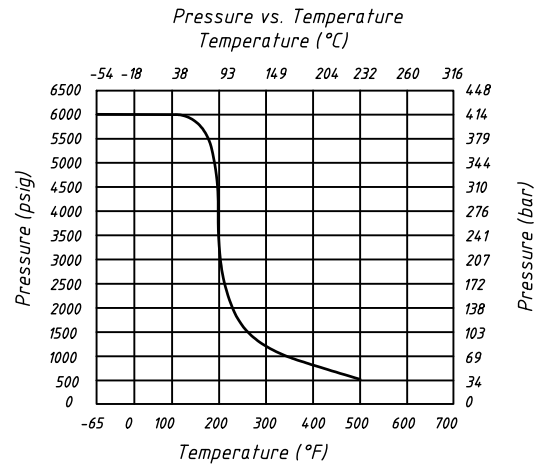
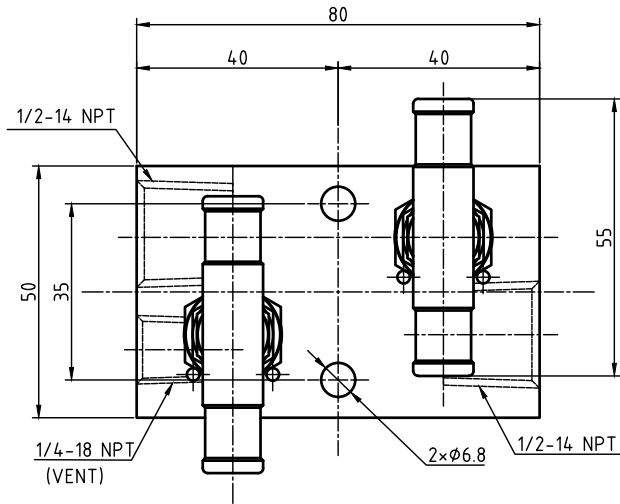


Valve Features	
Maximum working pressure	6000psig
Working temperature	-54℃~232℃
Orifice	4.0mm



IDX	designation	materials
1	Set Screw	Carbon Steel
2	Handle	Aluminum Oxide
3	Body	316L/A479
4	Gland	316L/A479
5	Bonnet	316L/A479
6	Lock Nut	316L/A479
7	Handle	Aluminum Oxide
8	Set Screw	Stainless Steel
9	Packing Bolt	316L/A479
10	Upper Stem	316L/A479
11	Gland	316L/A479
12	Packing	PTFE
13	Lower Stem	316L/A479

NOTE: Dimensions for reference only.

Linear unit of size: mm		2-Valve Manifolds		HTA-ПРОМ ТЕХНОЛОГИИ РЕШЕНИЯ СЕРВИС	
signature	date	versions	1		
design				Page 1/1	
audit					
ratify		MN2V-2-R7-F8N-S			